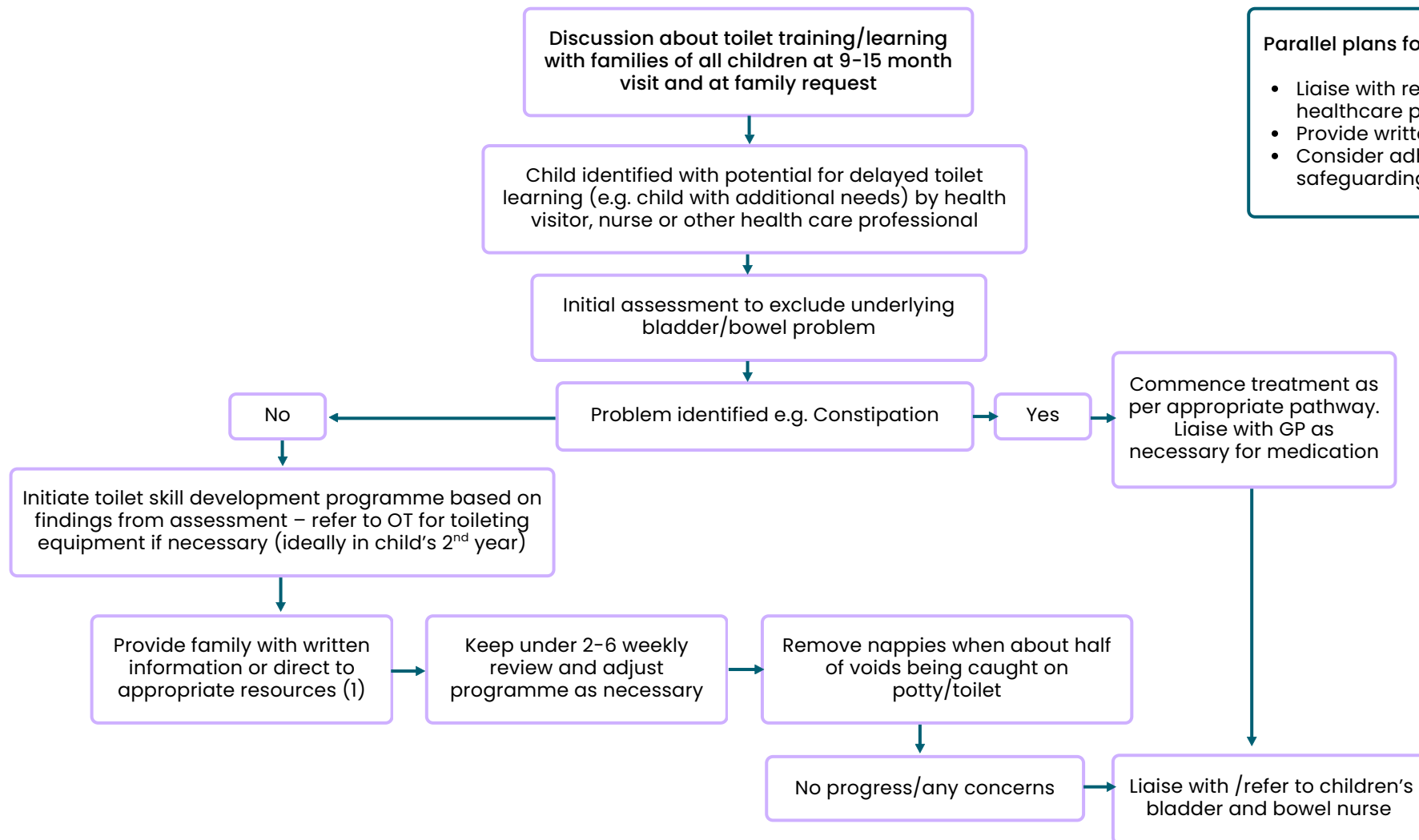


Notes:
 The children's bladder and bowel nurse will refer to other services as appropriate including paediatrics, psychology, CAMHS, dietetics or regional urology or gastroenterology.
 All children should undergo level 1 assessment and management prior to referral to a children's bladder and bowel nurse (level 2)
 Assessment and management should follow relevant national guidelines and quality standards, including those from NICE.

Resources / Reference:
 National Guidance for the Provision of Continence Containment Products to Children and Young People A [Concensus Document \(2025\)](#).

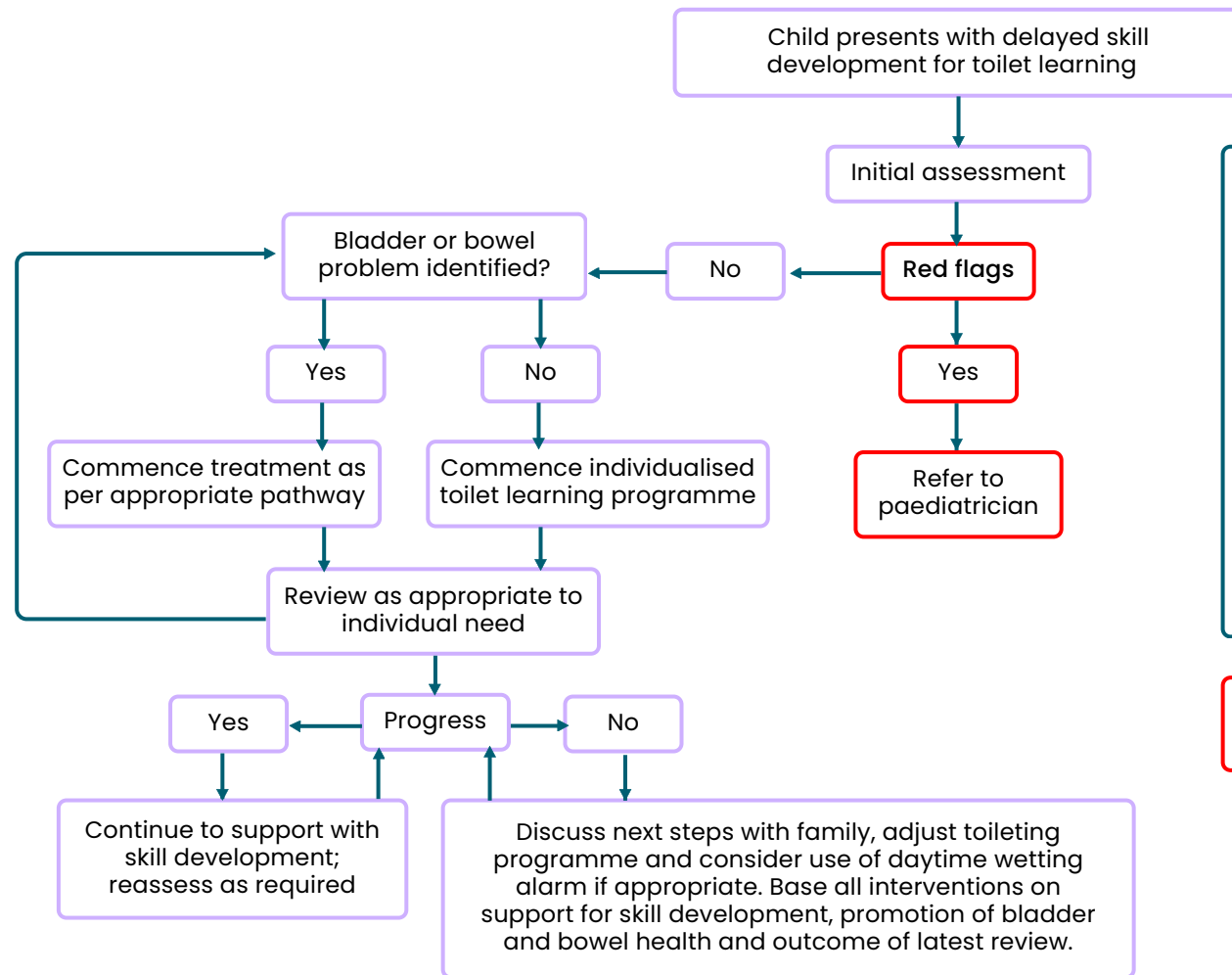


Parallel plans for all children

- Liaise with relevant healthcare professionals
- Provide written information
- Consider adherence and safeguarding issues

Resources / Reference:
 (1) Useful resources for [families and carers](#)
 (2) Best practice guidance on supporting [skill development for toilet learning](#)

For information on 'red flags' refer to [NICE guidance](#)



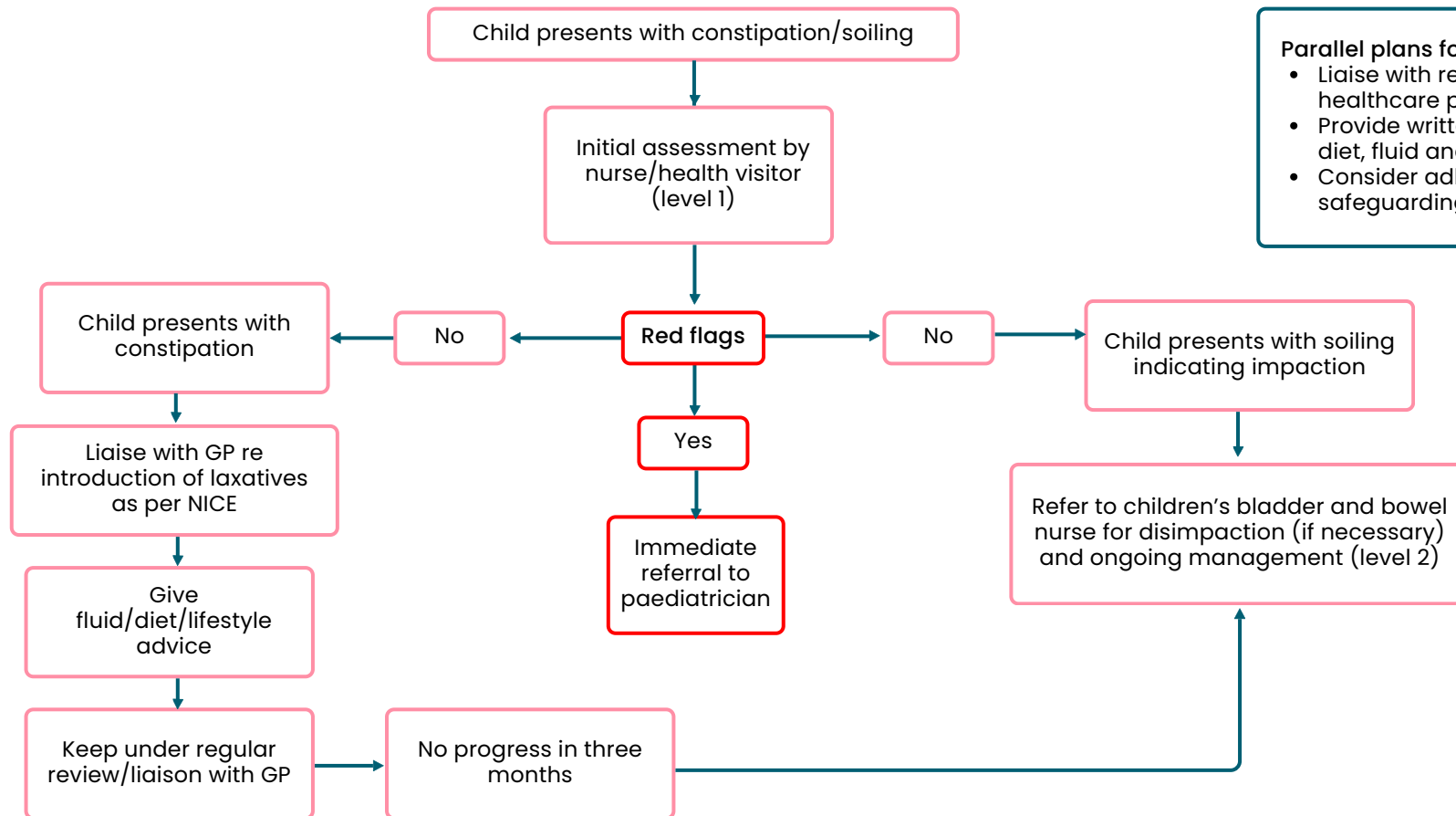
Parallel plans for all children

- Provide appropriate explanations and written information
- Provide appropriate dietary and fluid advice
- Liaise with multidisciplinary team as appropriate to promote consistency between carers
- If the child has physical or sensory difficulties consider OT referral for appropriate toilet aids and adaptations
- Consider adherence and safeguarding issues

For information on 'Red Flags' refer to [NICE guidance](#).

Bladder & Bowel UK resources

- [For families and carers](#) in Bladder & Bowel UK library
- [For professionals](#) in the Bladder & Bowel UK professionals library



Parallel plans for all children

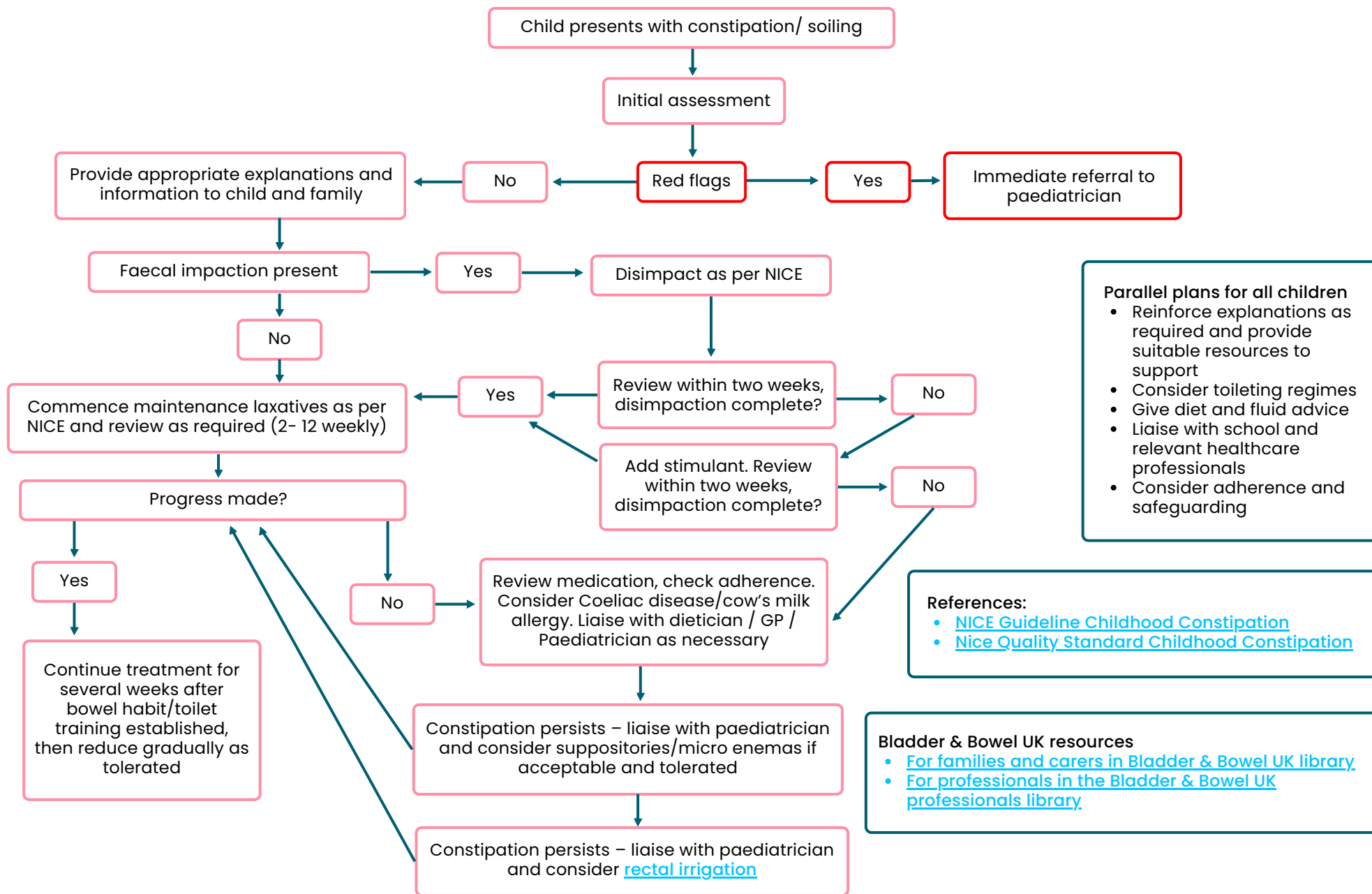
- Liaise with relevant healthcare professionals
- Provide written information, diet, fluid and toileting advice
- Consider adherence and safeguarding issues

For information on 'Red Flags' refer to [NICE guidance](#)

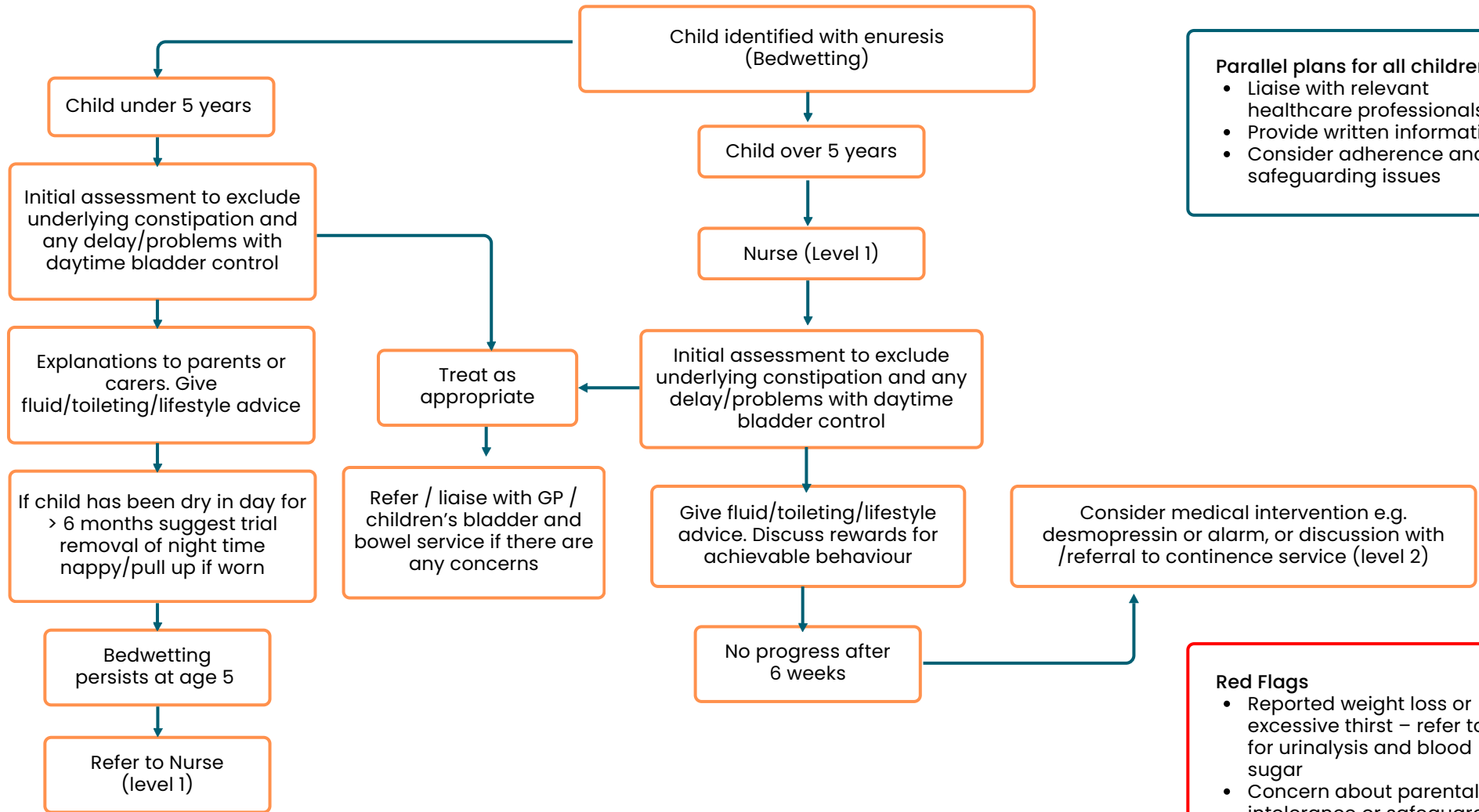
References:
[NICE Guideline childhood constipation](#)
[NICE Quality standard childhood constipation](#)

Bladder & Bowel UK resources

- [For families and carers](#) in Bladder & Bowel UK library
- [For professionals](#) in the Bladder & Bowel UK professionals library



Enuresis (Bedwetting) – level 1



Parallel plans for all children

- Liaise with relevant healthcare professionals
- Provide written information
- Consider adherence and safeguarding issues

Red Flags

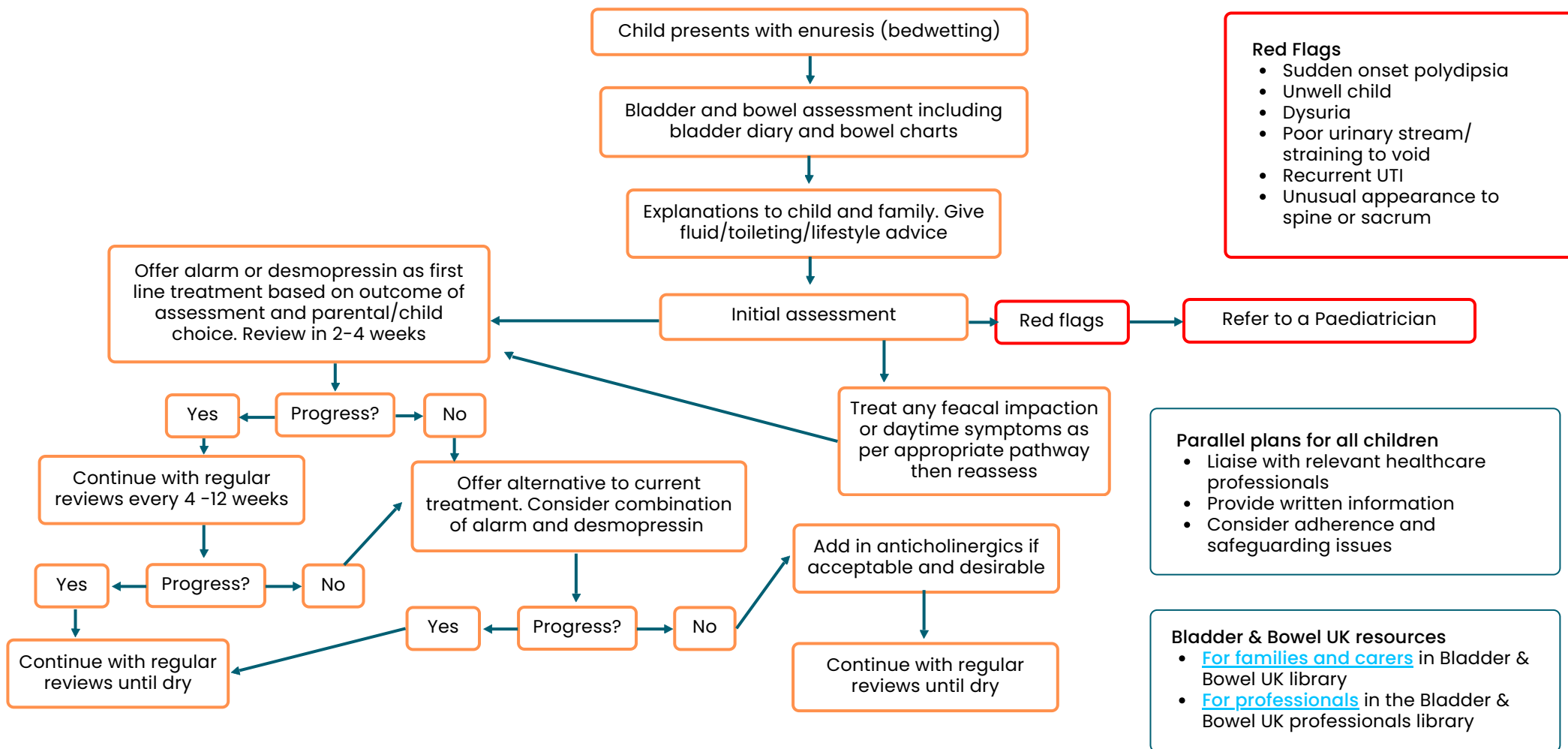
- Reported weight loss or excessive thirst – refer to GP for urinalysis and blood sugar
- Concern about parental intolerance or safeguarding issues – refer to local safeguarding policy

Bladder & Bowel UK resources

- [For families and carers](#) in Bladder & Bowel UK library
- [For professionals](#) in the Bladder & Bowel UK professionals library

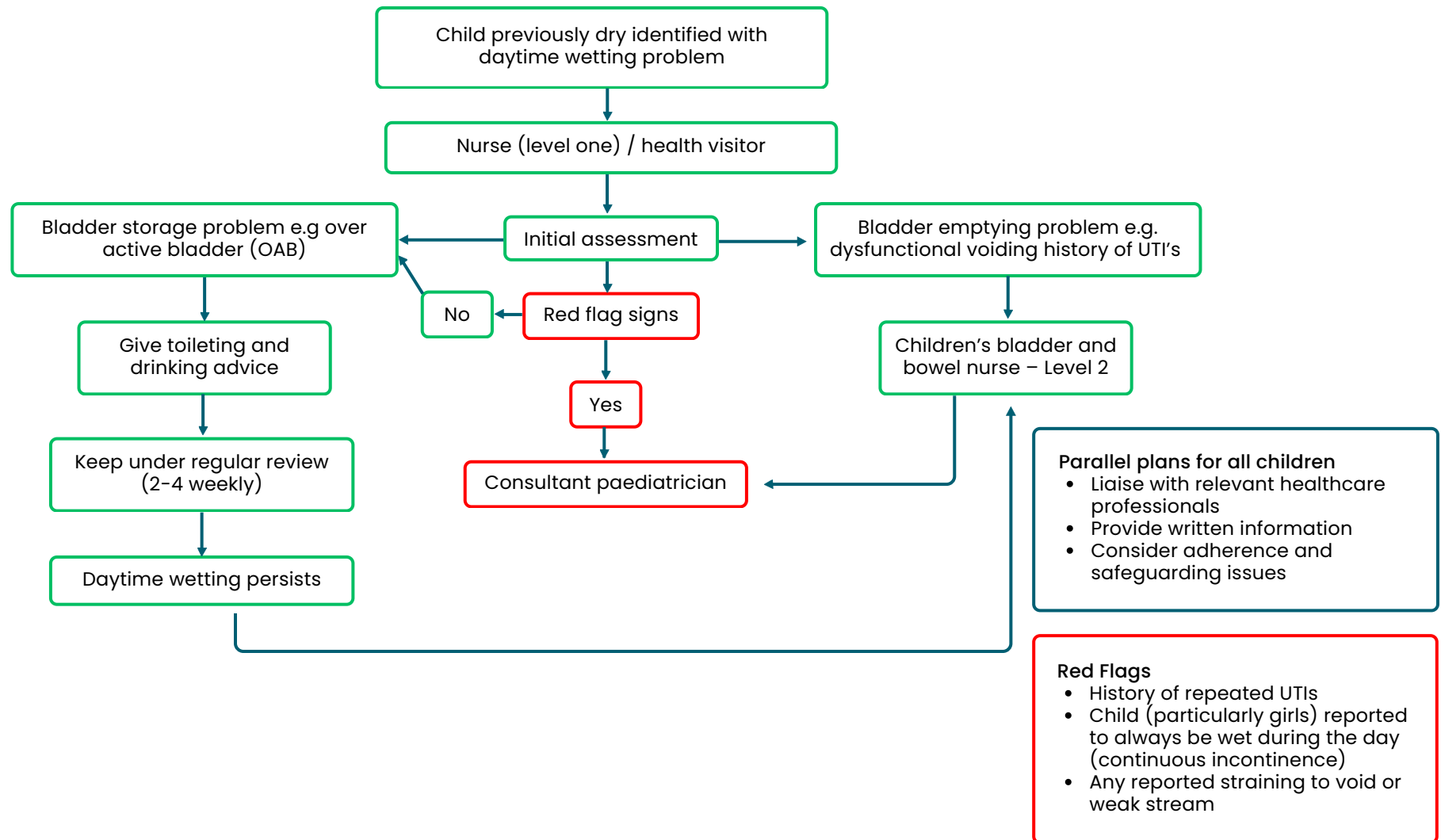
References:

- [NICE Guideline bedwetting in children and young people](#)
- [Nice Quality Standard bedwetting in children and young people](#)



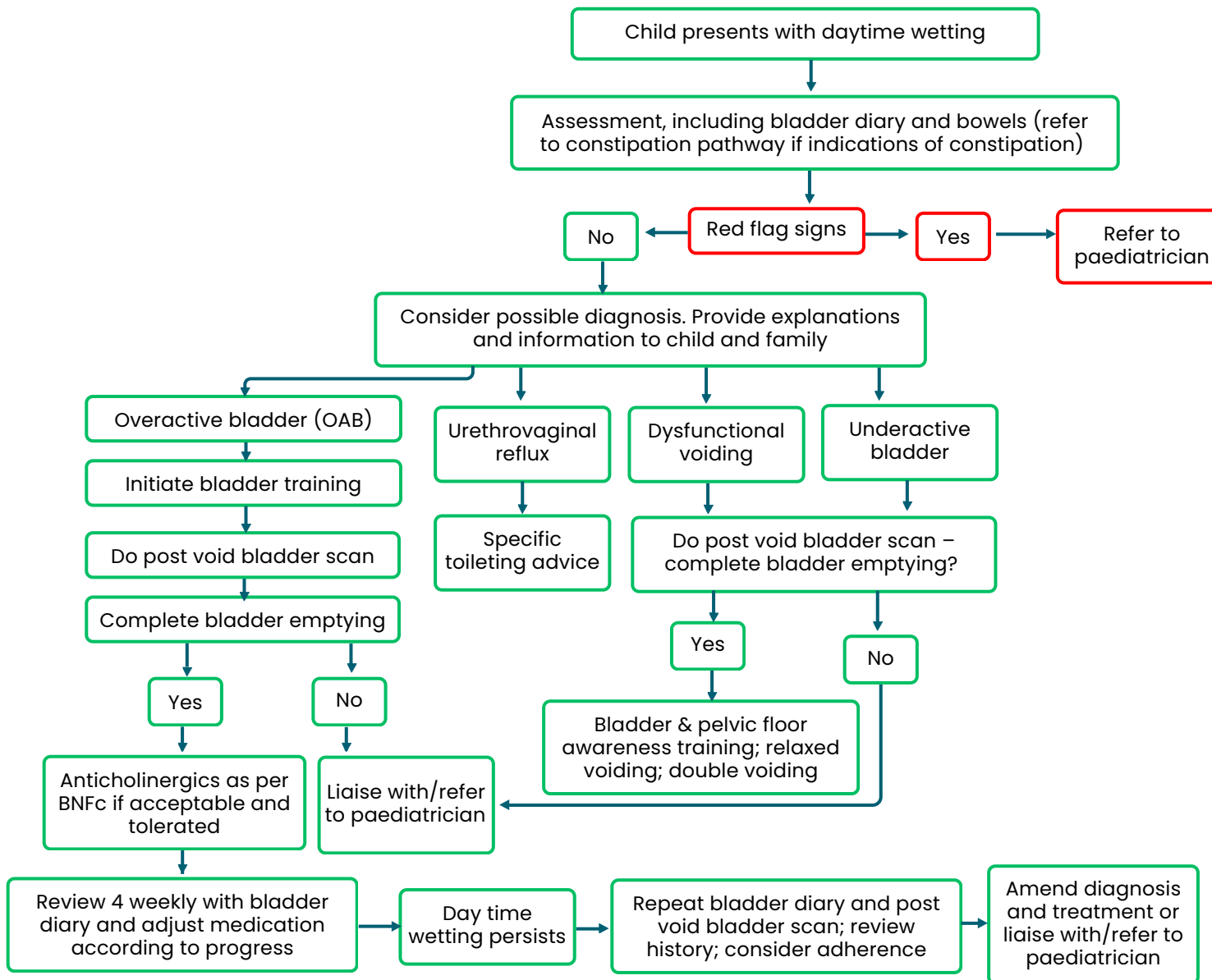
References:

- [NICE Guideline Bedwetting in children and young people](#)
- [NICE Quality Standard Bedwetting in children and young people](#)



Bladder & Bowel UK resources

- [For families and carers](#) in Bladder & Bowel UK library
- [For professionals](#) in the Bladder & Bowel UK professionals library



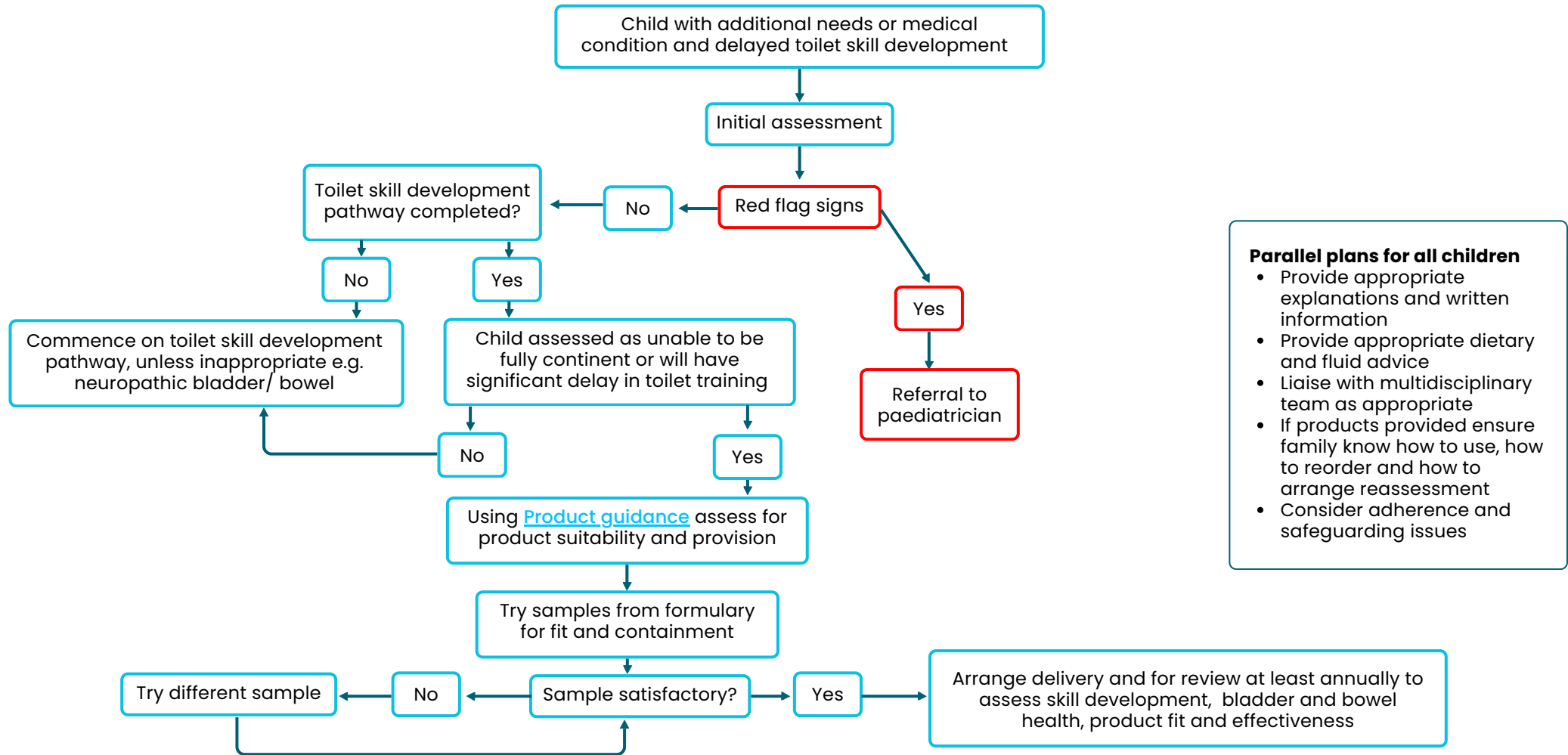
Red Flags

- History of repeated UTIs
- Child (particularly girls) reported to always be wet during the day (continuous incontinence)
- Any reported straining to void or weak stream

Parallel plans for all children

- Exclude constipation
- Provide lifestyle and bladder training advice
- Provide written information
- Liaise with school and relevant healthcare professionals
- Consider adherence and safeguarding issues

References:
 Chang S et al (2017) Treatment of Daytime Urinary Incontinence: A standardization document from the International Children’s Continence Society Neurourology and Urodynamics 36, 43-50



- Parallel plans for all children**
- Provide appropriate explanations and written information
 - Provide appropriate dietary and fluid advice
 - Liaise with multidisciplinary team as appropriate
 - If products provided ensure family know how to use, how to reorder and how to arrange reassessment
 - Consider adherence and safeguarding issues

For information on 'Red Flags' refer to [NICE guidance](#)

There is national guidance for the [provision of continence containment products to children and young people](#)

Children's Continence Care Pathways Levels 1 & 2

Further Information

Find more information about child bladder and bowel health in our [information library](#) and on our [website](#).

You can also contact the Bladder & Bowel UK confidential [helpline](#).

These pathways can be freely downloaded and printed as a whole. However, no part of this document may be copied or distributed without the authors' permission.

Copyright © Bladder & Bowel UK
Disabled Living
Registered Charity No 224742