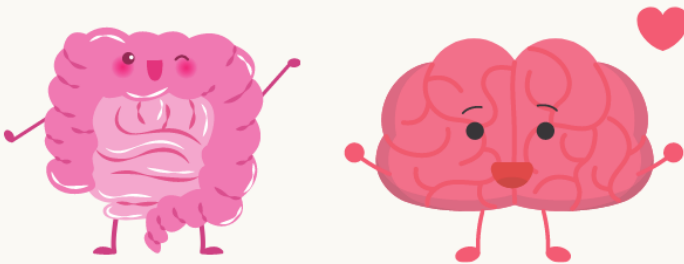


Research opportunity!

"Most parents of children with gastrointestinal symptoms say their health care team have not explained the link between physical symptoms and emotional wellbeing"



Researchers at the University of Surrey are looking how hospitals can better support the physical symptoms and emotional wellbeing of **children with gastrointestinal symptoms and/or conditions.**

Does your child have a digestive condition, like irritable bowel syndrome, gastroparesis, achalasia or functional dyspepsia? Or do they have diarrhoea, constipation or bloating? **We would like to talk with you and your child.**

In return, **we would like to give you a £20 Amazon voucher.**

Contact Rosie for more information:
r.satherley@surrey.ac.uk