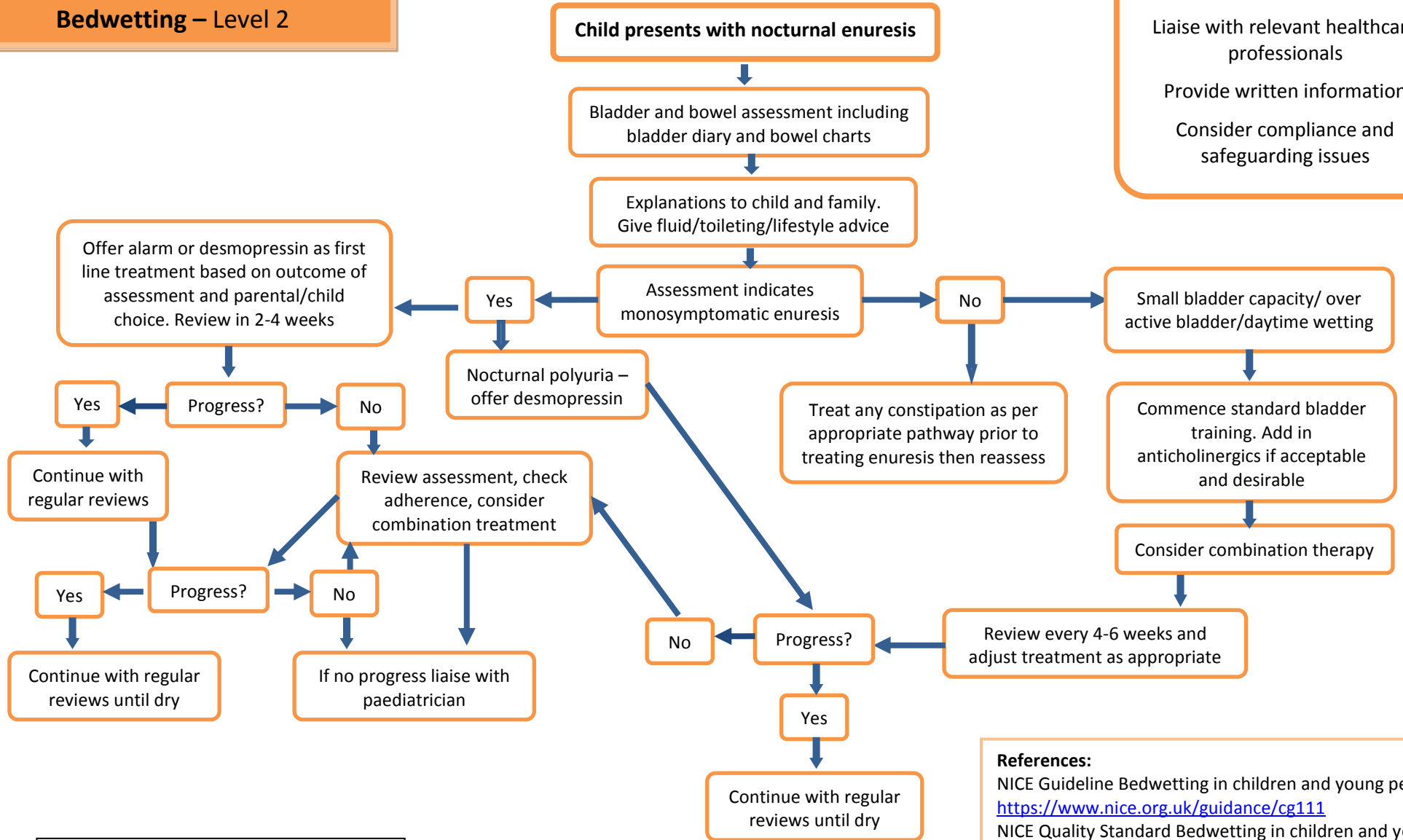


# Children's Continence Care Pathway Bedwetting – Level 2



**Parallel plans for all children**  
Liaise with relevant healthcare professionals  
Provide written information  
Consider compliance and safeguarding issues

**References:**  
NICE Guideline Bedwetting in children and young people <https://www.nice.org.uk/guidance/cg111>  
NICE Quality Standard Bedwetting in children and young people <https://www.nice.org.uk/guidance/qs70>